



Forest Service  
U.S. Department of Agriculture

Lincoln National Forest

## Forest Service News Release

Media Contact:

Phone: 575-270-2726

Email: [amanda.fry@usda.gov](mailto:amanda.fry@usda.gov)

### West Mountain Fire, August 22, 2023 Update

**Start Date / Time:** August 3, 2023

**Cause:** Lightning

**Size:** 601

**Containment:** 0%

**Location:** Northeast of Capitan, located on West Mountain in the Capitan Mountain Range.

**Fire Strategy:** Confine and Contain

**Resources:** 1 Handcrew, 1 Wildland Fire Module (WFM), 3 engines, 2 dozers, 2 masticators. Total personnel: 86

**Fire behavior:** Low/Moderate fire behavior.

**Types of vegetation in the area (aka fuels):** Pinyon pine, juniper, mixed conifer

**Values at risk:** No structures or communities are at immediate risk.

**Update:** Today, 86 firefighters and other support personnel will continue with their confine-and-contain strategy on the West Mountain Fire, a lightning-caused wildfire northeast of Capitan.

The intended result of managing naturally-caused wildfires is to reduce hazardous fuels, encourage the growth of native plants, increase species diversity, and restore ecological balance. Ultimately, this can help reduce the potential for future high-severity wildfires.

Firefighters will continue work to actively contain the fire while protecting nationally significant culture resources, timber, recreation, and other environmental and social values. Efforts include removing vegetation along the roads and trails and improving firelines.

**Smoke:** Smoke will be visible in coming days as the fire continues to progress across the landscape. Smoke will be heavier in the mornings as it settles into lower elevation and will lift as temperatures increase. Smoke will be visible along HWY 246, and from the communities of Capitan and Ruidoso.

**Visitor Information:** Visitors are advised to stay out of the fire area to allow for firefighters to quickly and safely access the fire. Hunters and recreators are advised to use precautions in the area. Expect to see smoke and related activity along HWY 246 outside of Capitan.

**Evacuations:** None

**Major Injuries/Fatalities:** None

**Road Closures:** None

#### More Information:

Facebook: <https://www.facebook.com/westmountainfire2023>

Twitter: [@LincolnUSForest](https://twitter.com/LincolnUSForest)

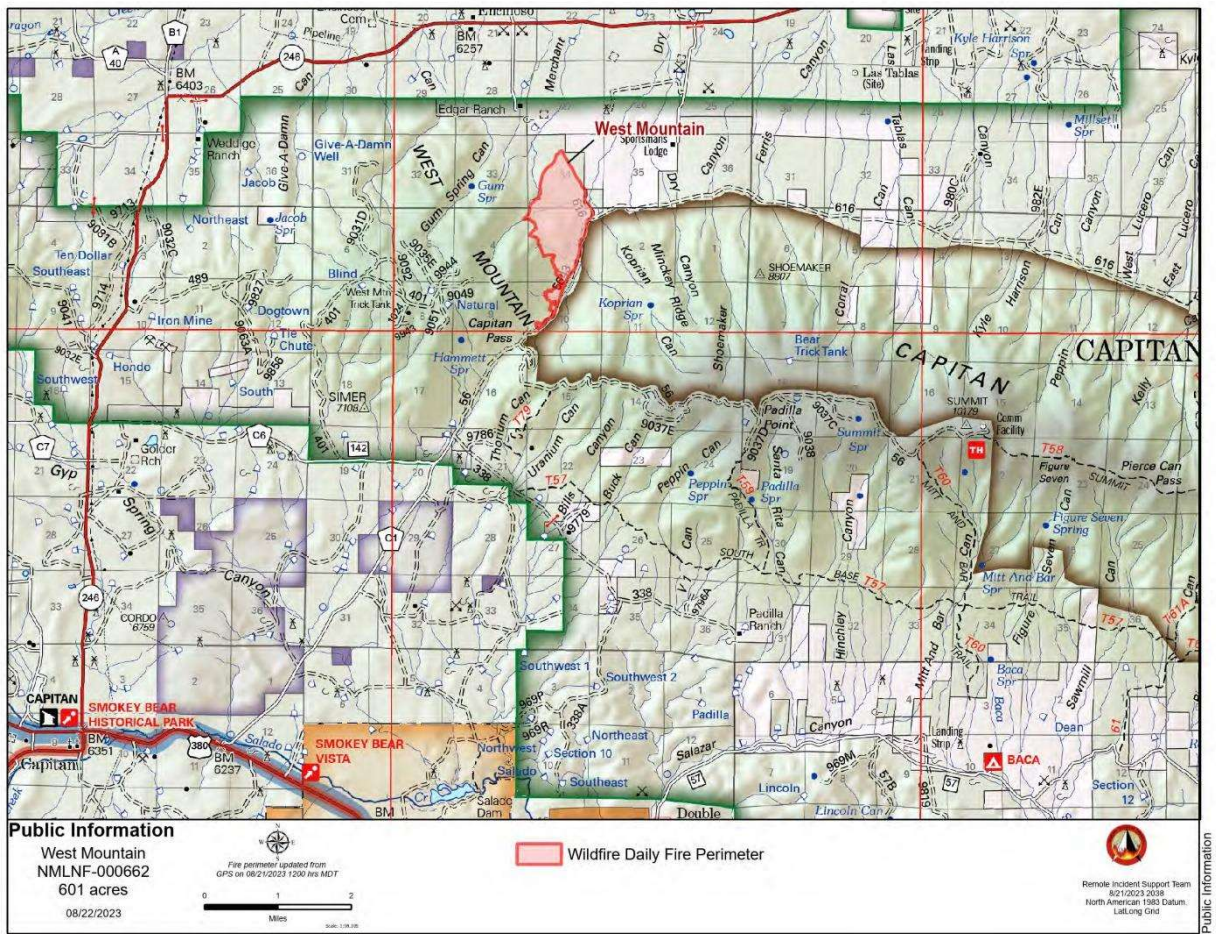
Inciweb: <https://inciweb.wildfire.gov/incident-information/nmlnf-west-mountain>

Other: [www.NMFireInfo.com](http://www.NMFireInfo.com)

Updates will be released daily to inform the public.

###

USDA is an equal opportunity provider, employer and lender.



(Map Courtesy of USDA Lincoln National Forest)